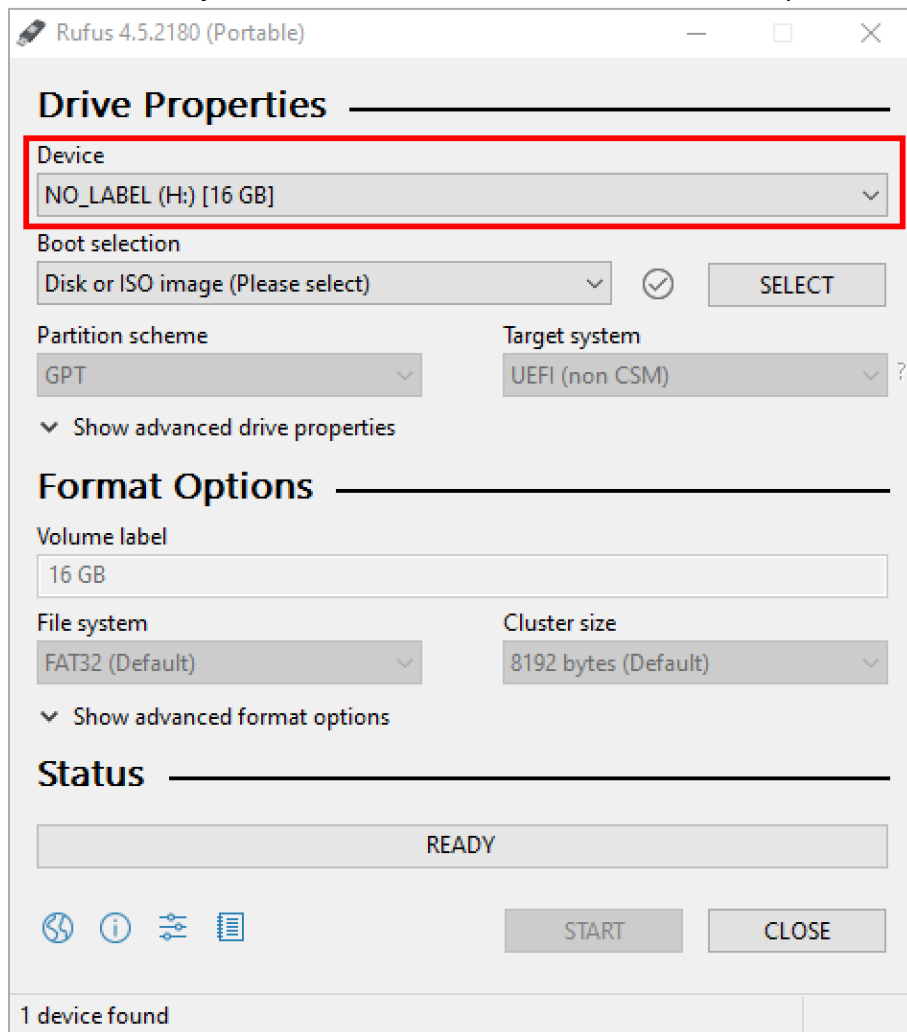


Preparation

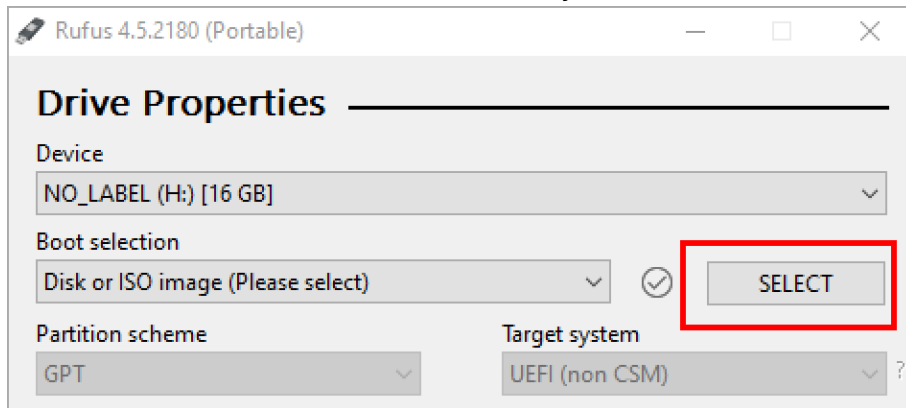
1. Download the files sent, the disk image in iso, and the md5 file with the checksum of iso.
2. Make sure the md5 checksum matches and the downloaded disk image is not damaged.
3. Download the tool to create a bootable USB flash drive. Rufus or balenaEtcher.
4. It is necessary to use a USB flash drive with a capacity of at least 8 GB. It is important to use a high-quality USB 3.0 flash drive.

Create bootable drive via Rufus

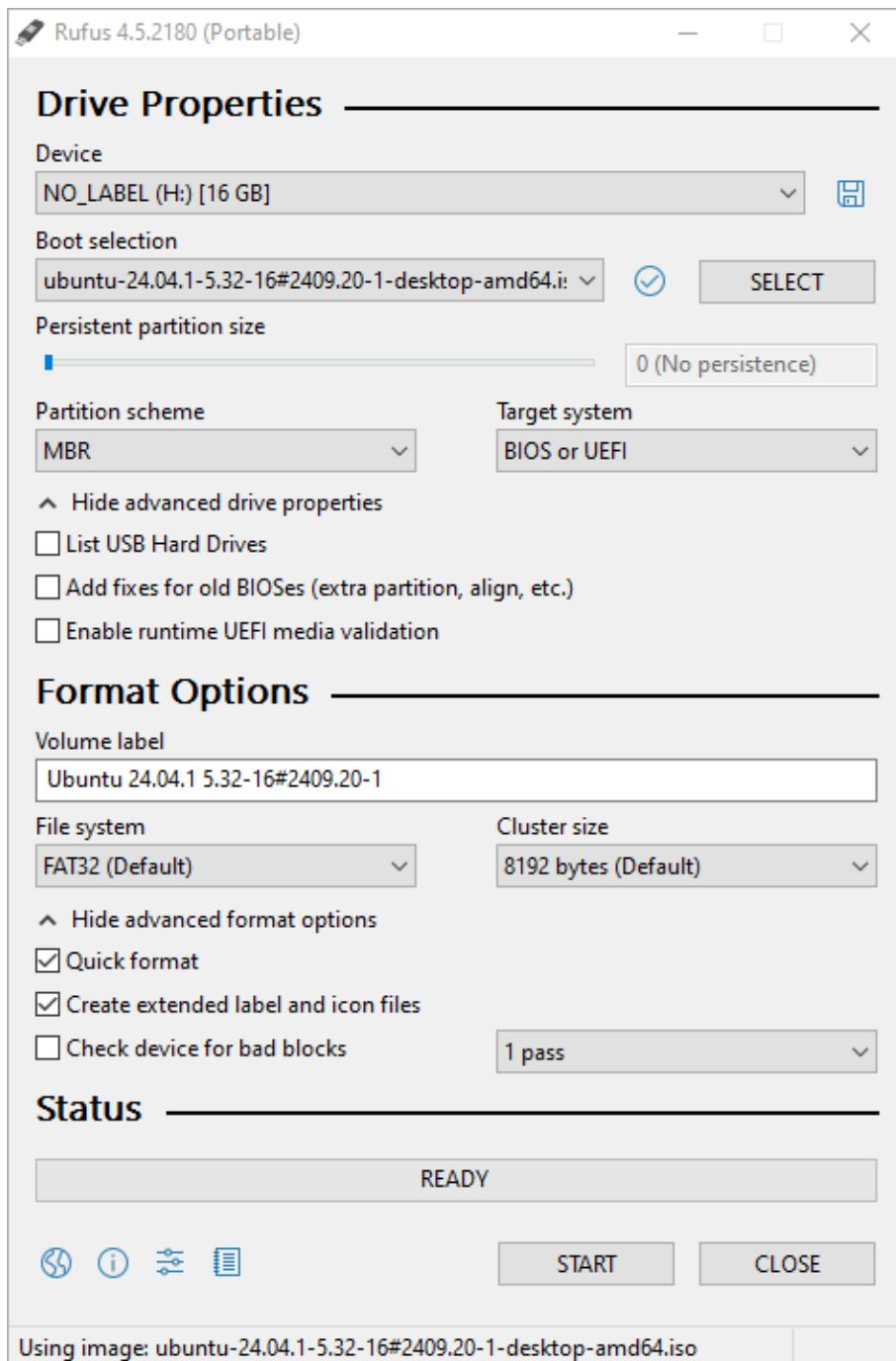
1. Official website: <https://rufus.ie/>. You can download the tool via the direct link: <https://github.com/pbatard/rufus/releases/download/v4.5/rufus-4.5p.exe>.
2. The functionality was checked with version 4.5.2180.
3. Connect your USB flash drive to your computer and run the tool.
4. Make sure that your USB flash drive is selected in the Device option.



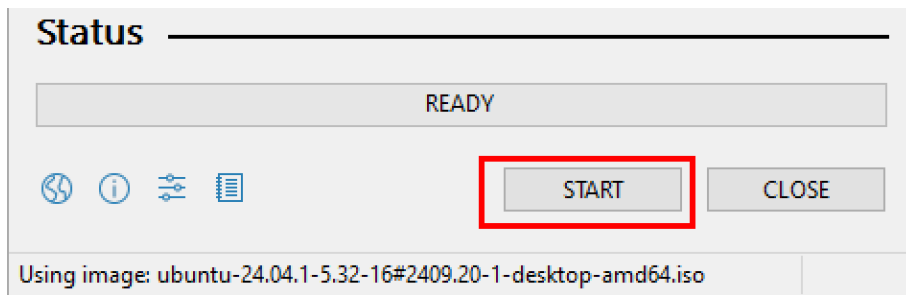
5. Press the SELECT button. Select the ISO file you downloaded earlier.



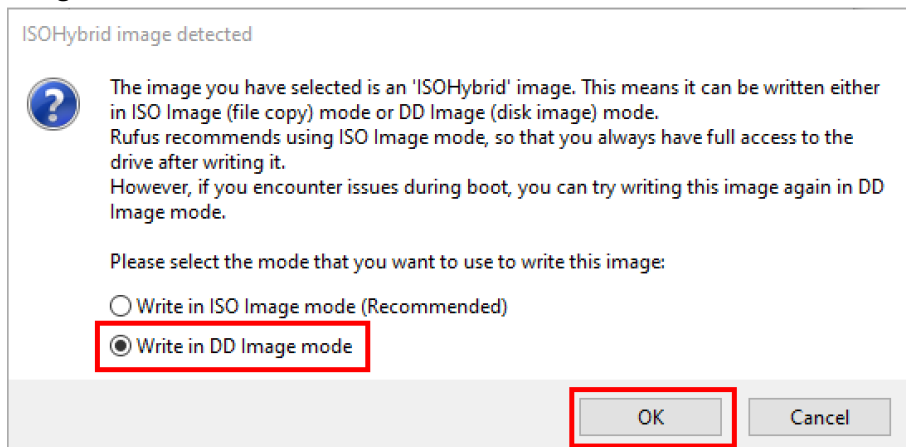
6. There is no need to change the settings at this step. You need to leave all the default values as in the screenshot.



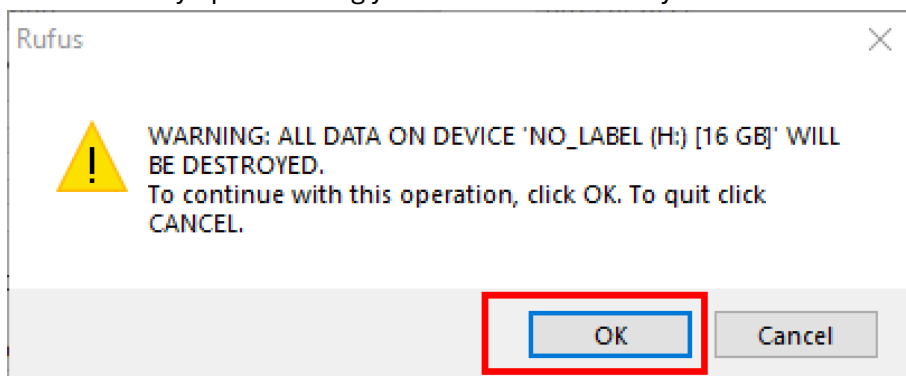
7. Click the START button at the bottom of the window.



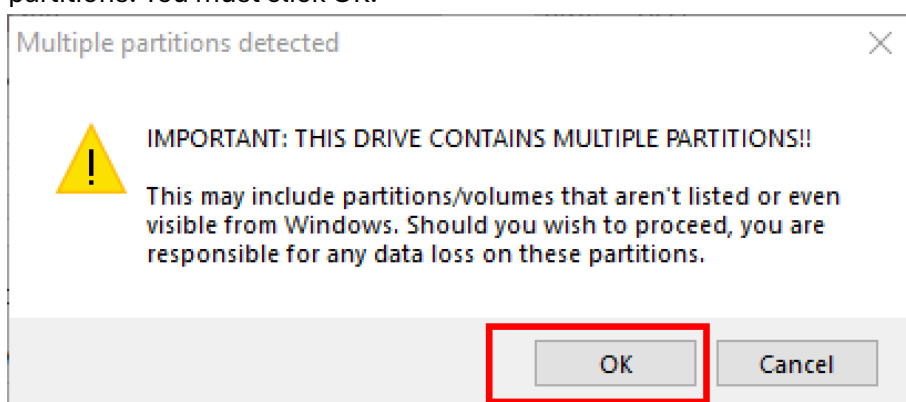
8. A window should appear with the option to select a mode. You must select "Write in DD Image mode". Then click the OK button.



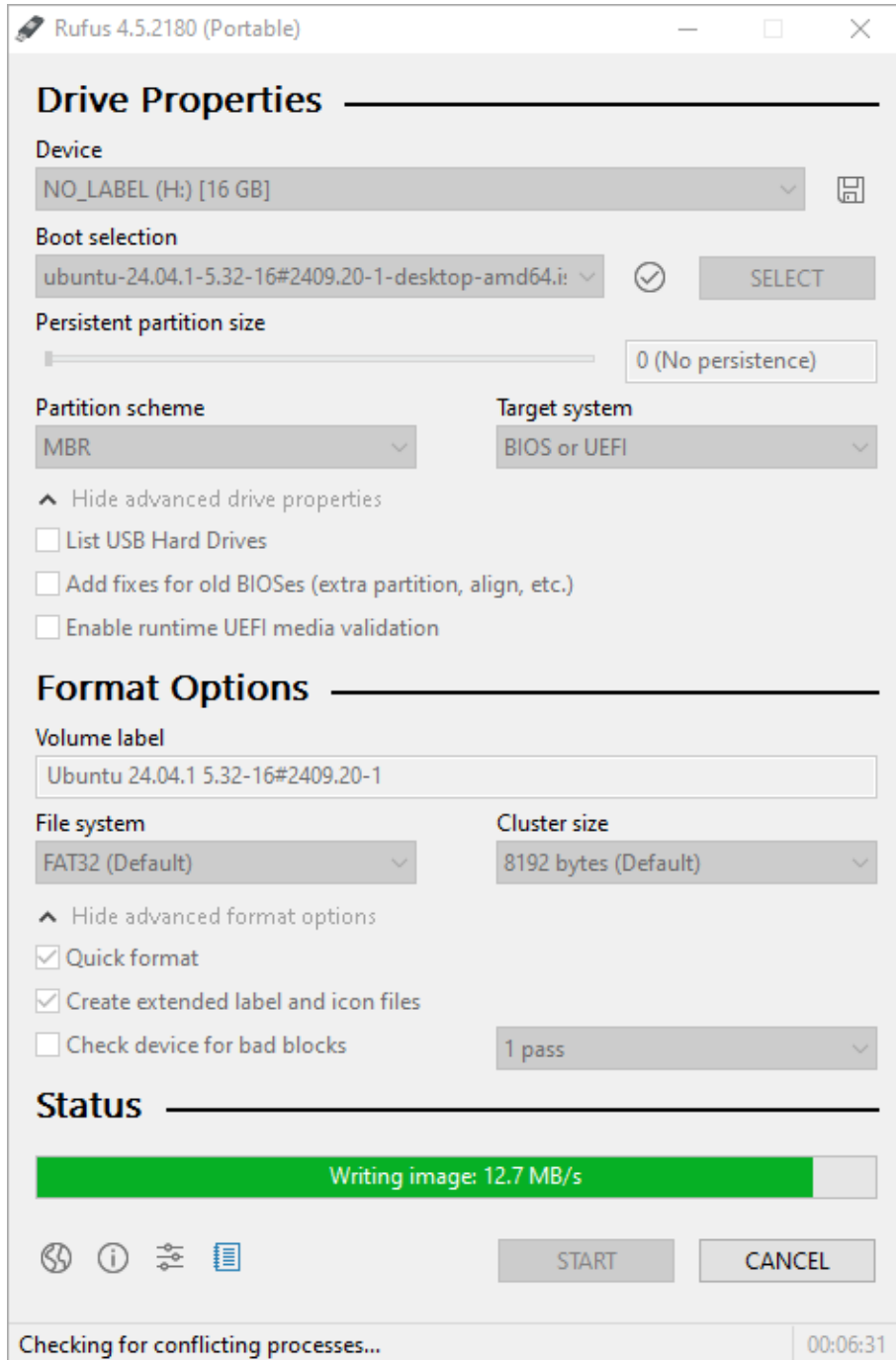
9. A window may open warning you about data loss on your USB drive. You must click OK.



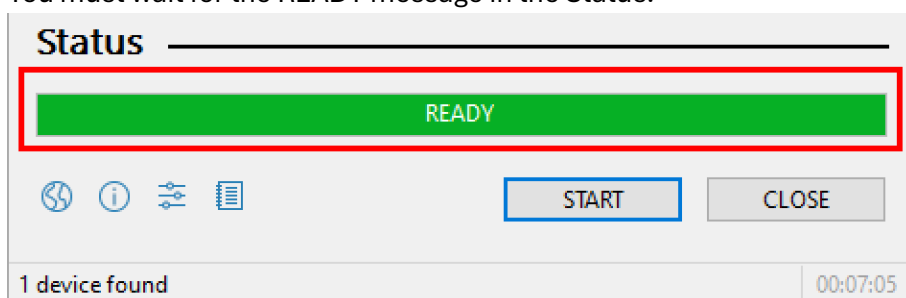
10. Additionally, a window with a second warning may open. If your USB drive has several partitions. You must click OK.



11. The process of recording ISO to USB drive will start. You need to wait until it is finished. The process may take about 10 minutes. Depends on the characteristics of your USB drive.



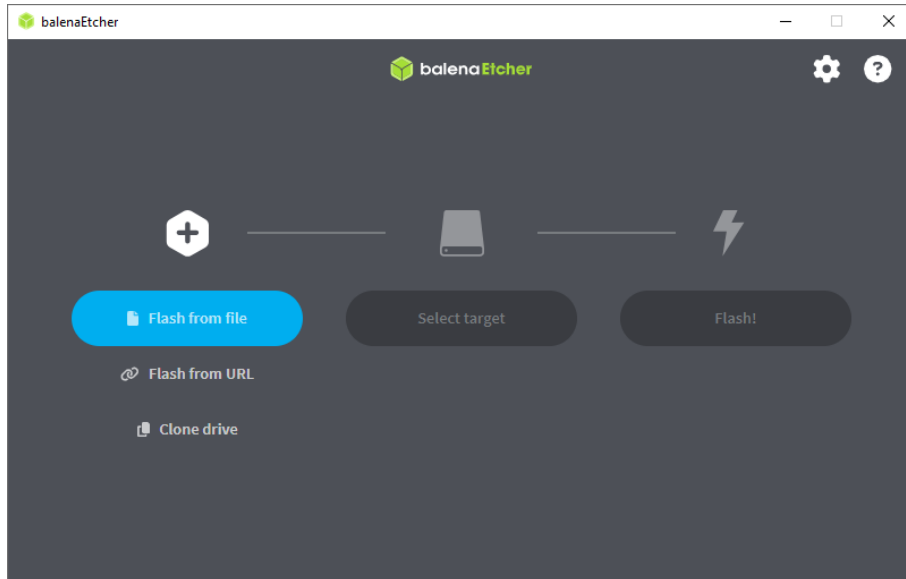
12. You must wait for the READY message in the Status.



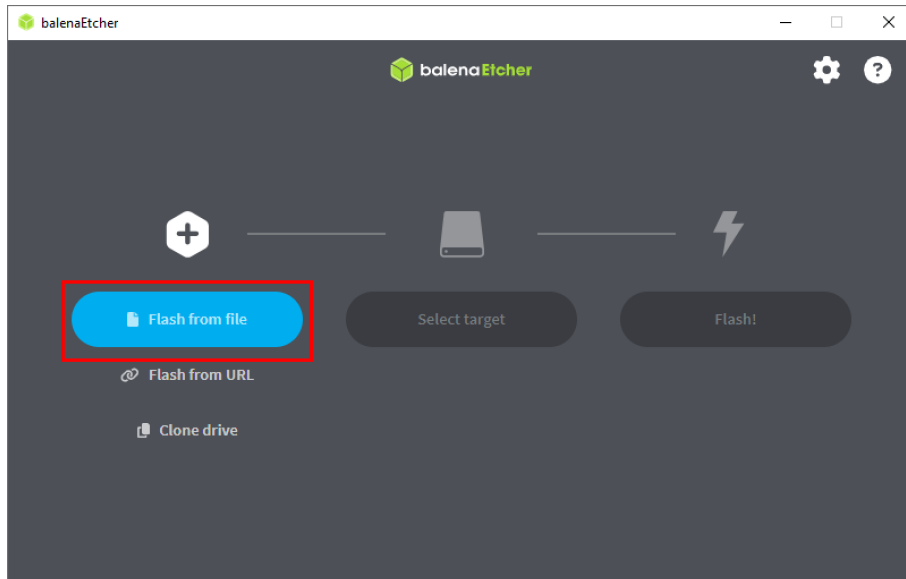
13. Now you can close the application by pressing CLOSE button. The USB drive must be safely removed and disconnected from the computer. You can proceed to the system installation process.

Create bootable drive via balenaEtcher

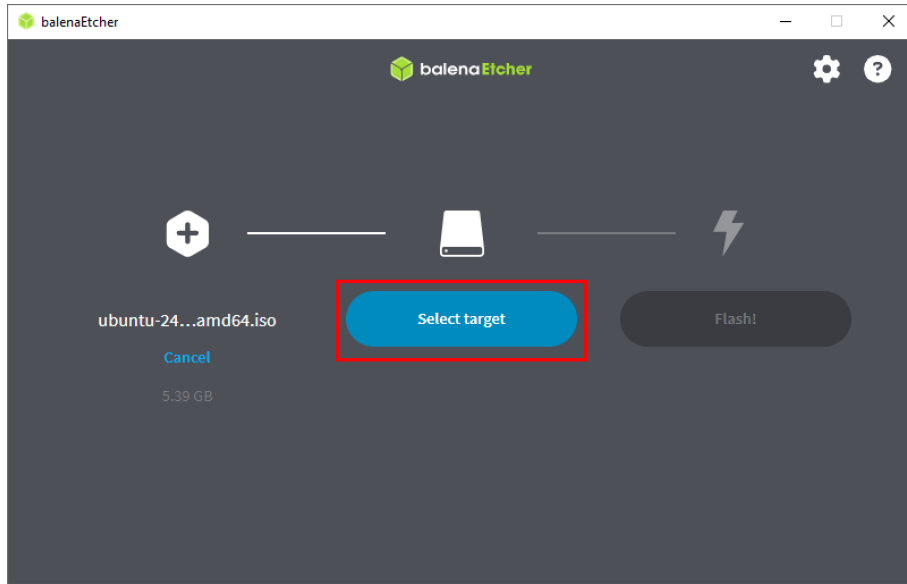
1. Official website: <https://etcher.balena.io/>. You can download the tool via the direct link: <https://github.com/balena-io/etcher/releases/download/v1.19.21/balenaEtcher-1.19.21.Setup.exe>.
2. The functionality was checked with version 1.19.21.
3. Connect your USB flash drive to your computer and run the tool.
4. When you launch the application, nothing will be selected.



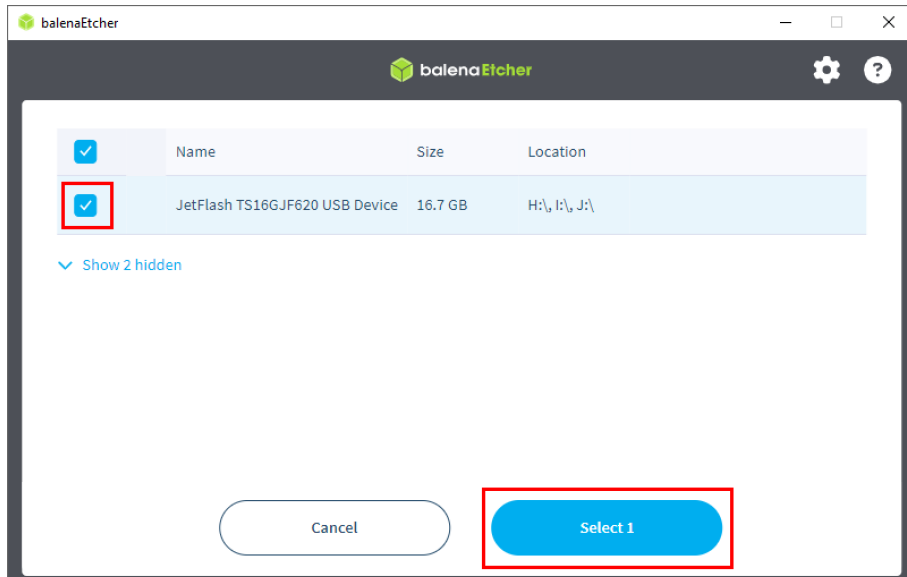
5. You need to click on the "Flash from file" and select the previously downloaded ISO file.



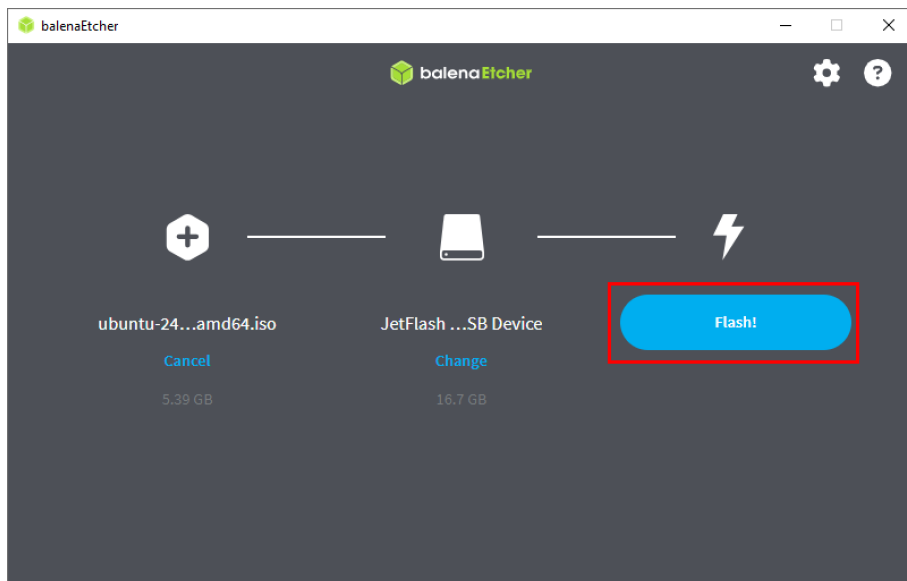
6. Click the "Select Target" button to select your USB drive.



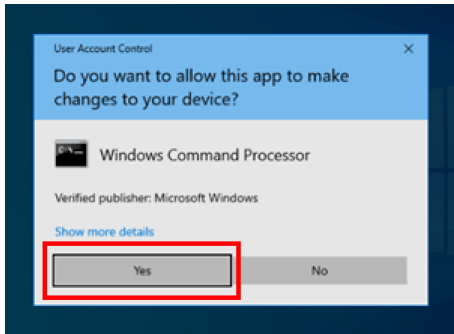
7. Check the box next to your USB drive and click the "Select 1" button.



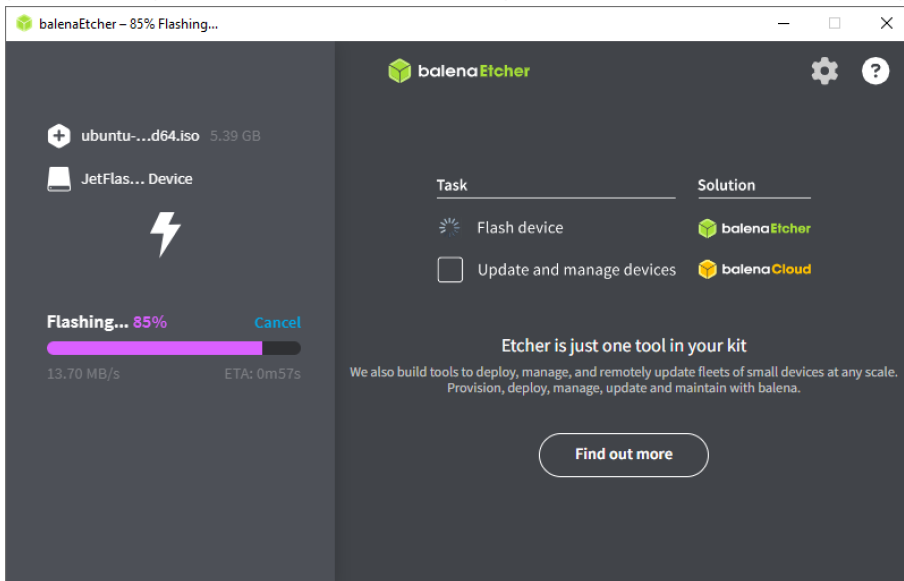
8. Click the "Flash!" button.



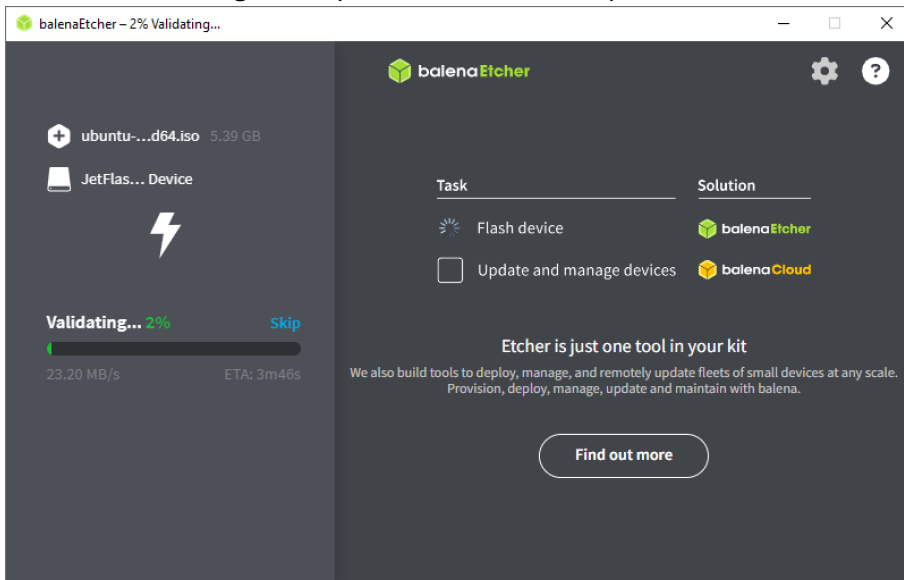
9. A window from the OS may open asking for elevated rights. You must click on button “Yes”.



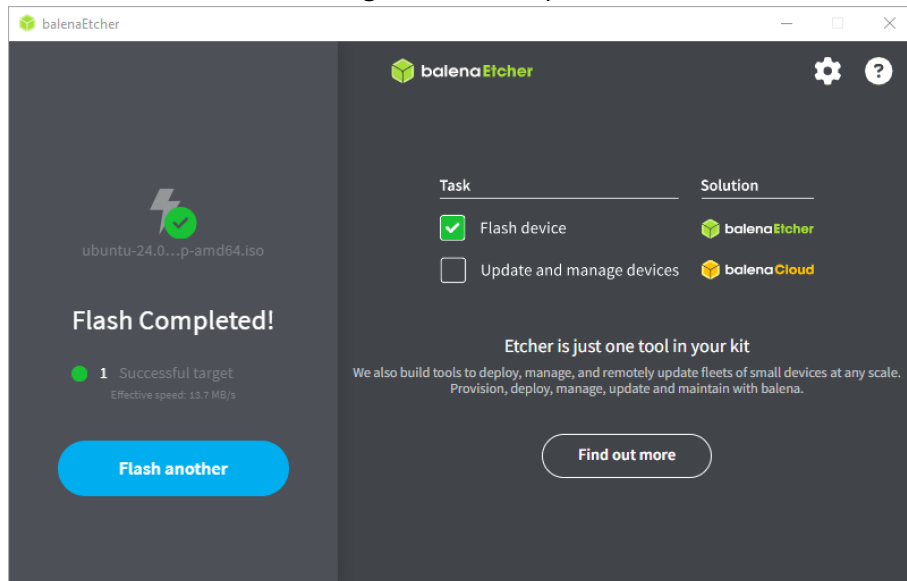
10. The process of recording ISO to USB drive will start. You need to wait until it is finished. The process may take about 10 minutes. Depends on the characteristics of your USB drive.



11. Once the recording is complete, the verification process will start. You need to wait.



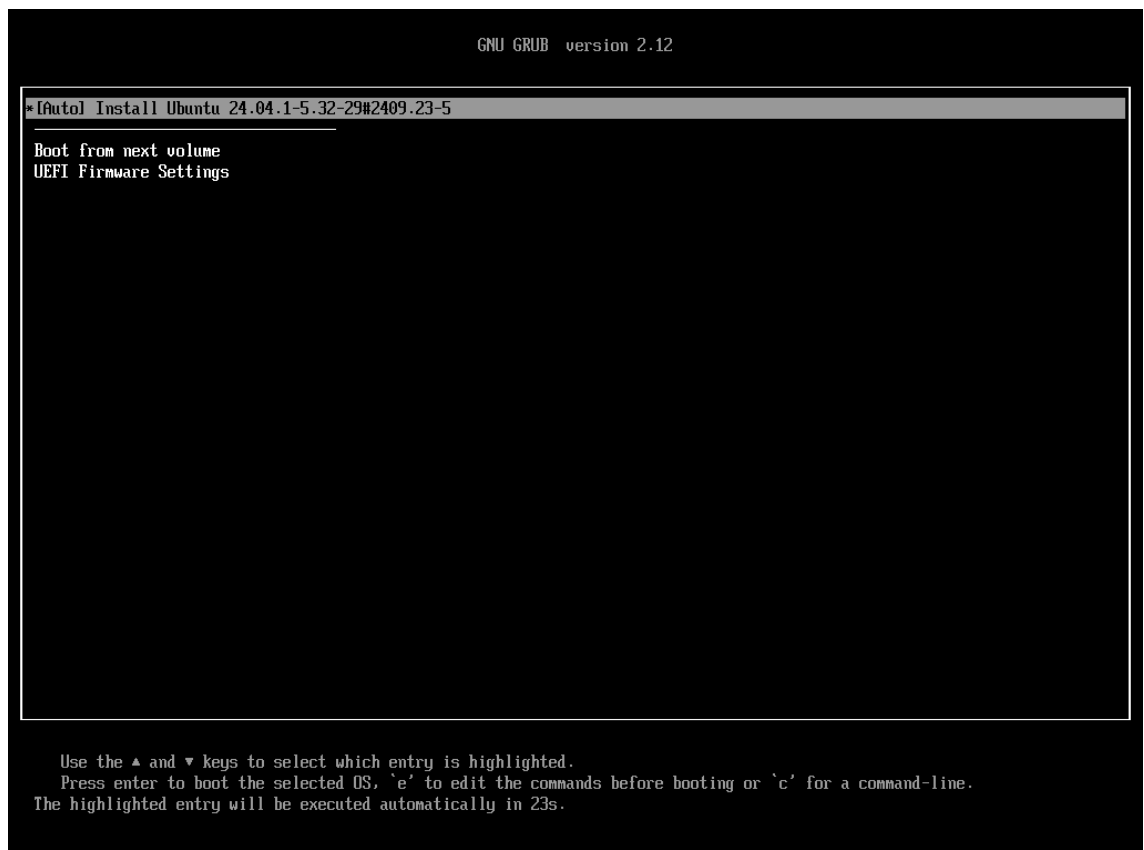
12. You must wait for the message "Flash Completed!".



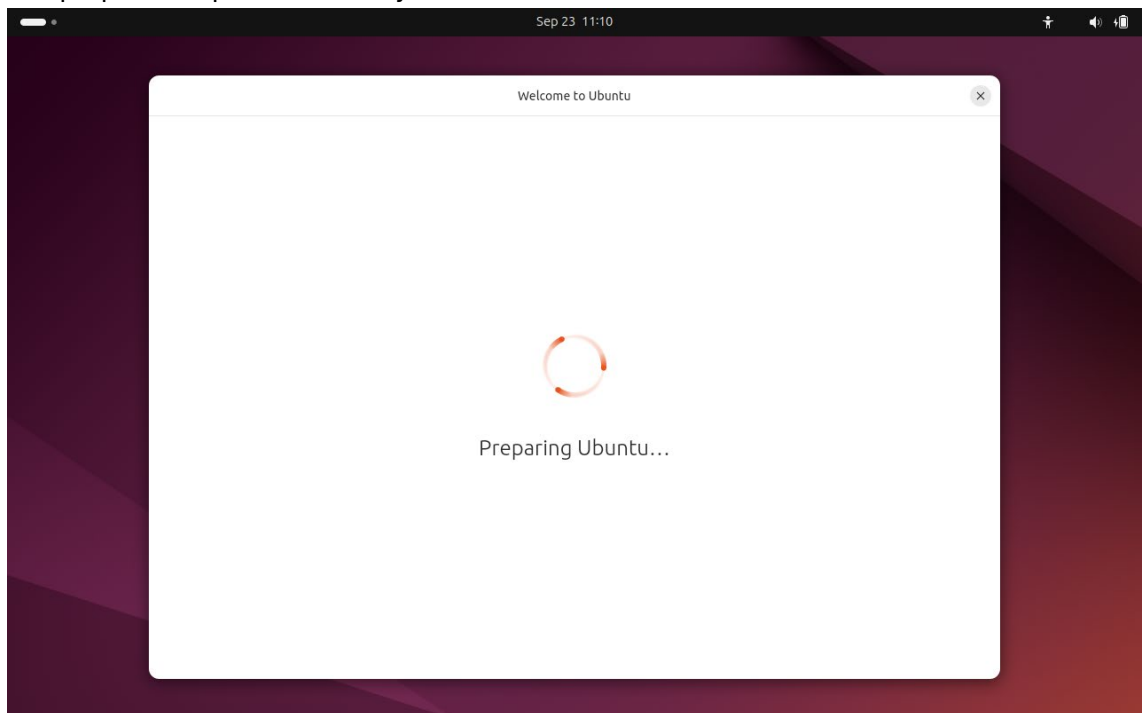
13. Now you can close the application by pressing X button. The USB drive must be safely removed and disconnected from the computer. You can proceed to the system installation process.

Installing the system

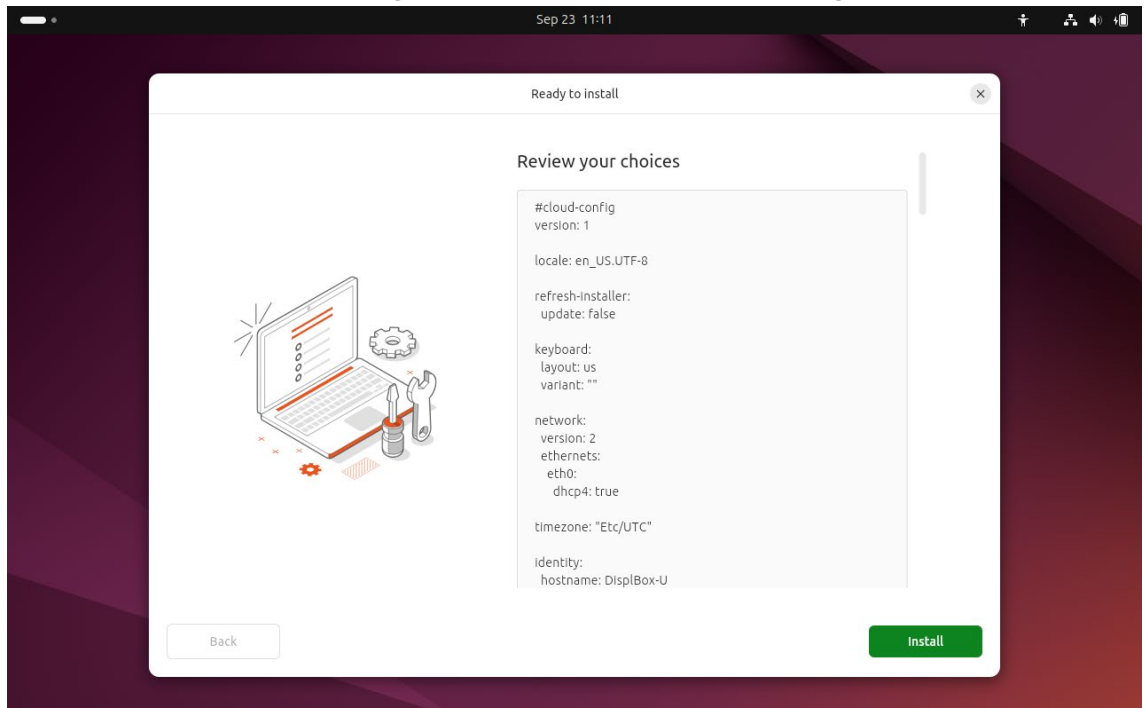
1. Connect your USB drive to the switched off device on which you want to install the system.
2. Turn on the device, boot from USB drive. To boot from a USB device, you may need additional settings in the BIOS or pressing a special F-button when turning on the computer.
3. When booting from a USB drive, you will see a black screen and white text. The "[Auto] Install Ubuntu" item must be selected. You must press Enter on the keyboard or wait 30 seconds for automatic selection.



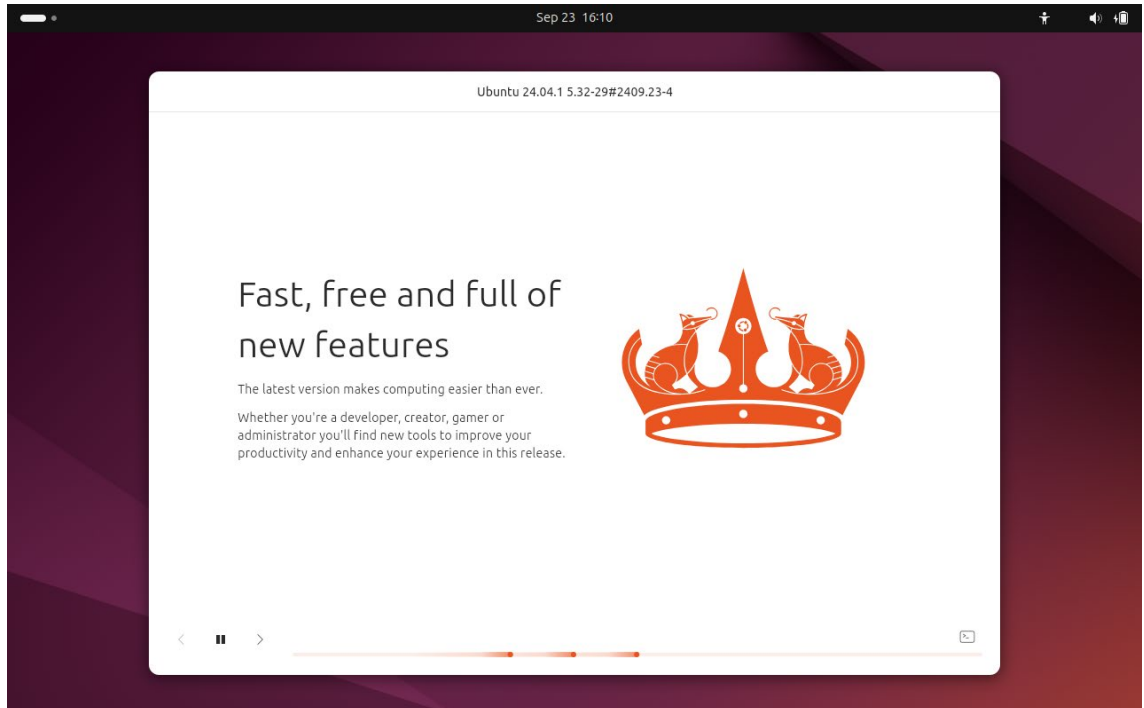
- You need to wait until the live system loads. After loading, a window with the title "Welcome to Ubuntu" will appear on the screen. The window will contain the text "Preparing Ubuntu...". The preparation process usually takes about one minute.



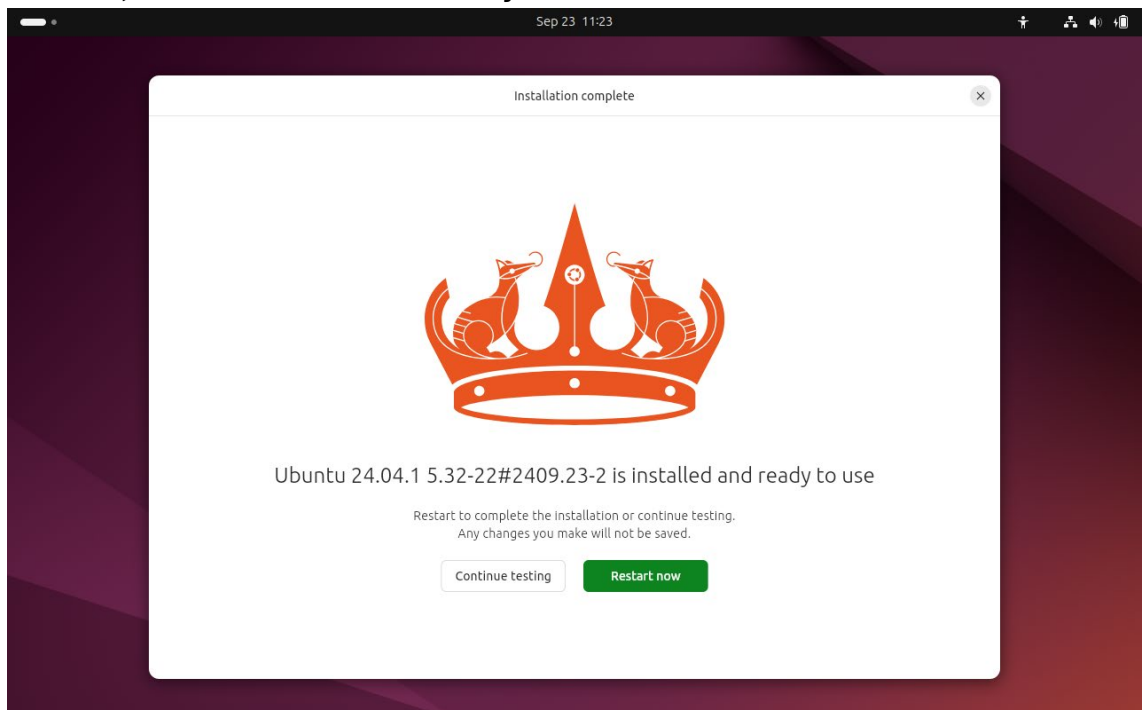
- After the preparation is complete, a window with the title "Ready to Install" will appear on the screen. You must click the green button "Install" in the lower right corner of the window.



- The installation process will start. During the process, you can see the animation at the bottom of the window. The process will take approximately 10 minutes.



- You must wait for the process to complete. If completed successfully, a window with the title "Installation complete" will appear. **Do not press any buttons yourself! After 5 seconds, the device will automatically shut down and turn off.**



- After turning off the device, the USB drive can be disconnected.
- The device is ready for use by the end user.
- Important! Do not start the device and boot the system before the procedure of cloning the hard drive to other devices.** When you first turn on the device, a special script is launched once.